

SAFETY COVERS

ABOUT OUR COVERS



Your Safety is Our Priority.

Our Safety Pool Covers are engineered and designed to be the safest and strongest cover possible. While some of the competitors use a single strap system on their covers, these Safety Covers are made with double strapping throughout the cover.

The double strapping guarantees almost twice the break strength compared to the single strap. With our solid brass anchoring system and stainless steel springs, our goal is to make the safest cover possible. Our covers meet and exceed all of the ASTM standards, giving your family and your pool maximum protection.

Double Strapping

Compared to single strapping used by other cover manufacturers, our double strapping is nearly twice as strong. We use double strapping on our entire cover, not just the perimeter edge, which provides you with extra strength and safety.

Strap Spacing

Our strap spacing is much closer than some other cover manufacturers. With closer spacing, you cannot lift the edge of the pool cover to gain access into the swimming pool.

FEATURES

SUPERMESH: 20 yr Pro-Rated Warranty

The tightly woven fabric of this cover provides two levels of protection. Since this tight weave provides almost total shade, the sun's algae producing rays do not enter the water, leaving your pool virtually algae-free in the spring. This super tight weave allows water to seep through the cover while filtering out all but the finest debris. Available in green/black, tan/black, blue/black and gray/black construction.

EXTREMESH® 15 yr Pro-Rated Warranty

A tightly woven mesh that blocks nearly 100% of the sun's rays, preventing algae growth. Rain and melting snow pass right through for easy drainage and safety. Durability and strength will protect your family and investment. Available in green/black, tan/black, blue/black and gray/black construction.

HEAVY-DUTY SOLID: 10 yr Pro-Rated Warranty

Available with or without mesh drain panels. Cover without mesh drain panels blocks 100% of sunlight and is sold with an automatic pump. To meet ASTM standards, the pump must be used at all times. Available in green, blue, tan and gray.

IN ACCORDANCE WITH ASTM-F 1346-1991

ALL OF OUR SOLID COVERS OR MESH COVERS...

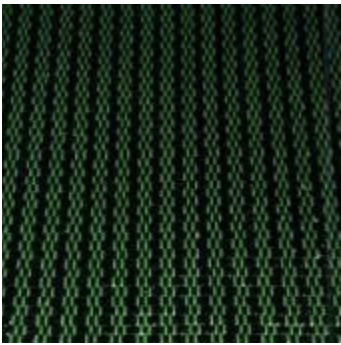
... give your pool a blanket of protection and the peace of mind that you have one of the safest pool covers available. Both the Mesh and Solid Safety Pool Covers offer you the features listed below.

FEATURES

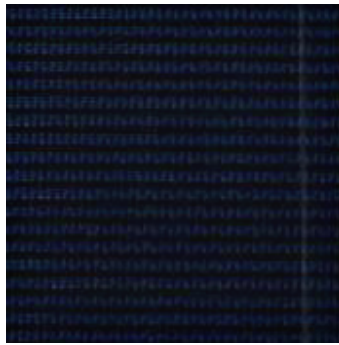
- Double-Web Strapping that is More Than 50% Stronger Than Single-Web Strapping
- Solid Covers are Made of State-of-the-Art Reinforced Vinyl Material
- Solid Brass Anchoring System
- Custom Manufacturing
- Order Processed Quickly
- Stainless Steel Springs with Covers
- Extremesh Covers made of Grade A Polypropylene. The dense mesh weave keeps out sediment and reduces algae growth

COLORS

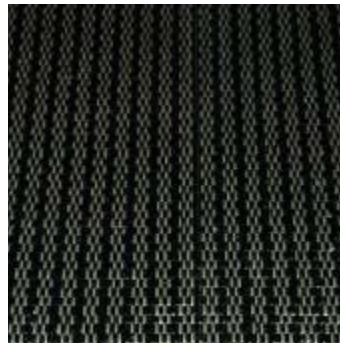
EXTREMESH®



GREEN



BLUE

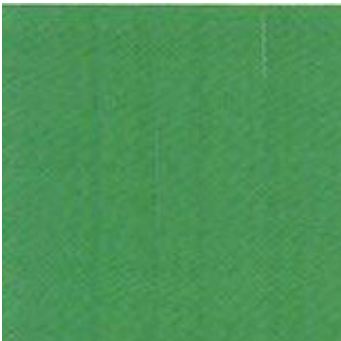


GRAY



TAN

SOLID



GREEN



BLUE



GRAY



TAN



GAP CLOSING



ANCHOR & CABLE SYSTEM



CUSTOM SIZES AVAILABLE



ELIMINATES ALL GAPS

- **Eliminates Gaps** between safety cover and raised wall area
- Retrofits to any existing wall treatment with **Anchor and Cable System**
- **Custom Sizes Available** to fit tight radiuses
- **Dual action Protection Safety Cover** sandwiched between the upper and lower chambers
- **Ease of Storage** - gap closers are separate from the safety cover
- Prevents debris, small pets, rodents, etc. from getting into your pool
- **Color-Coordinated** to match your safety cover